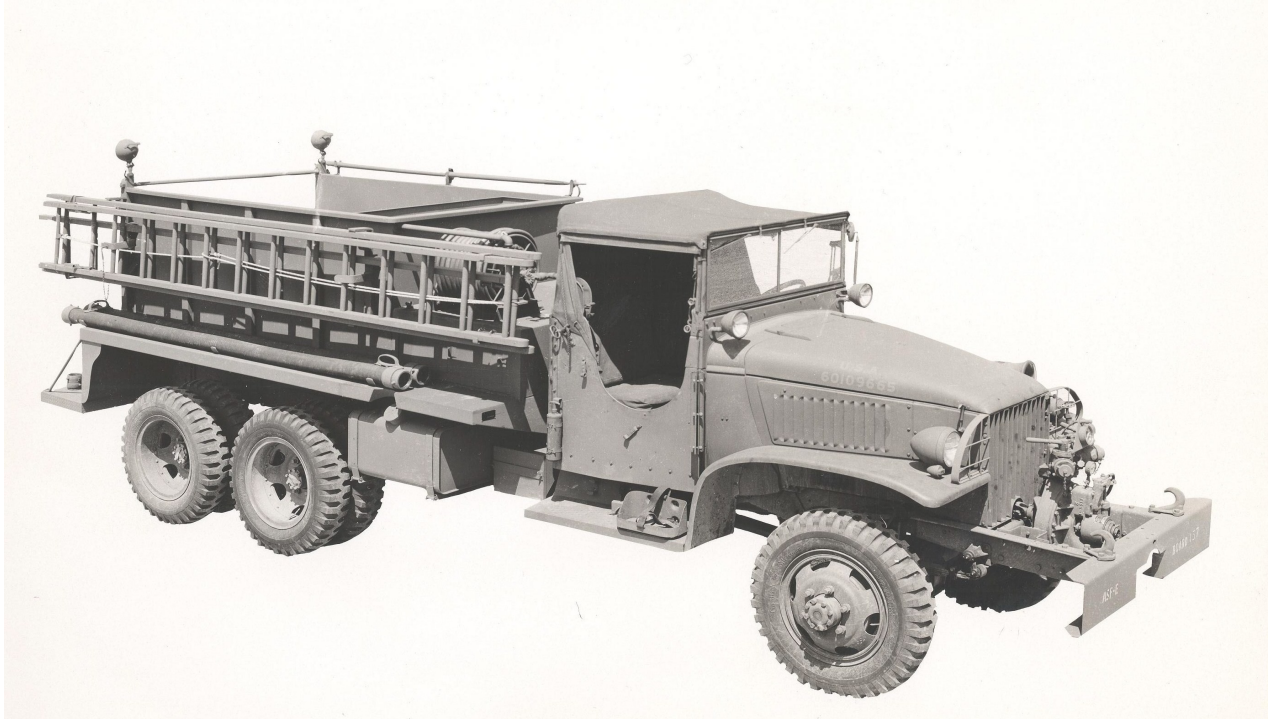


Truck, Powered Pumper, Class 335



Class 335 Conversion Kit Fire Truck USA 60109665

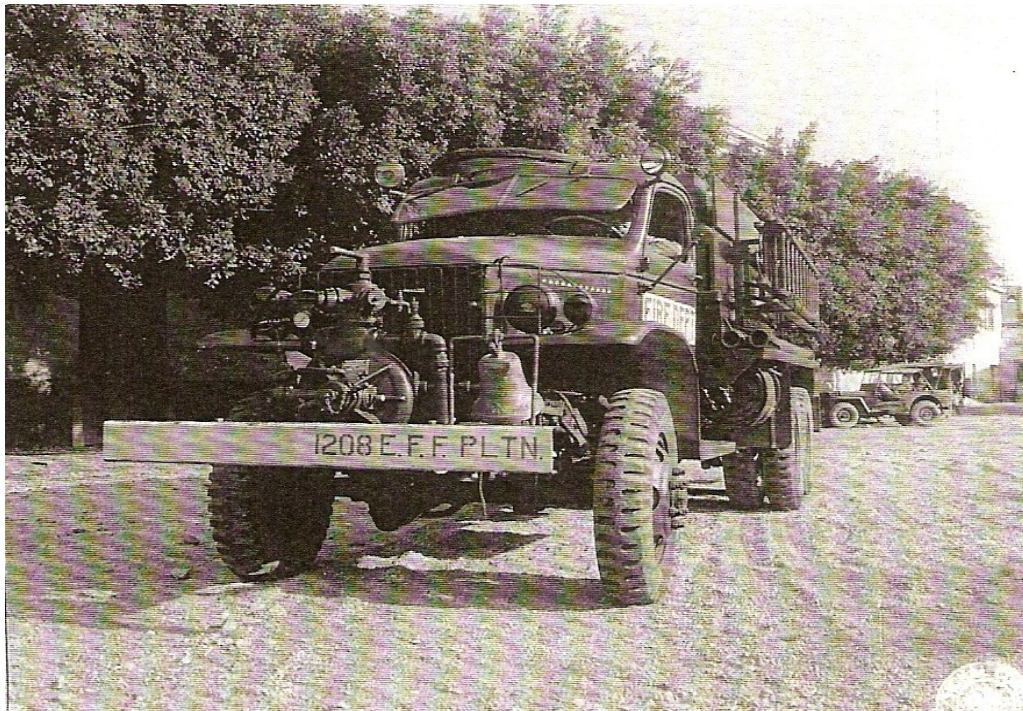
The Class 335 had its beginnings in 1943 when a hybrid fire truck was created by the members of the 1208th Engineer Fire Fighting Platoon in Algiers, North Africa. With assistance from the 469th Engineer Maintenance Company a 800 gallon water tank was mounted on a standard closed cab, GM, CCKW, 2 ½ ton, 6 x 6 cargo truck. Next, the pump, piping, tools, hose and other equipment from a Class 325 were added and the new fire truck proved quite successful.

Because the Class 325, the most commonly used fire truck in the theaters of operations had not proven satisfactory for all conditions of service the Corp of Engineers, in February, 1944, set out to develop fire fighting equipment using as many parts common to the Class 325 as possible. The new unit, could be shipped as a kit to the theaters of operations for mounting on the standard military 2 ½ ton, 6 x 6, chassis. Using the success of the 1208th fire truck and information developed by the Corps of Engineers plans for a new fire truck to be known as the Class 535 moved forward. Initially the conversion kit was to be supplied with a 500 GPM front mounted pump, but in September 1944 the Corps of Engineers elected to retain the 300 GPM pump of the Class 325. In March 1945, the Corps of Engineers contracted with the General Fire Truck Corp., a division of General Detroit to build 50 conversion kits to modify the standard GM, CCKW, 2 ½ ton, 6 x 6 chassis into a fire fighting vehicle, now reclassified the Class 335. Two, 2 ½ ton, 6 x 6 truck chassis and two Class 325 fire trucks were delivered to the General Fire Truck factory for development of the pilot model which would be completed in ten or twelve days.

The body of the Class 335 was constructed of steel and included a 640 gallon elliptical shaped water tank, together with supports, wood slat hose bed, tool compartment, running boards, a portion of the

hooks and brackets for mounting tools and all bolts, nuts, washers and screws needed for mounting the body to the chassis. Included in the kit were the rear stop assembly and frame extension for mounting the 3000 GPM pump on the front end of the chassis. The conversion kit was intended for installation in the field. It was intended that all fire fighting tools, including hose reels would be removed from a Class 325 and used to equip the converted vehicle.

Class 335s were sent to each Army Training Center in the United States that conducted fire fighting training. Many of the Class 335s saw service in the postwar Pacific Theater including Korea and Japan.



Fire truck created by the 1208th Engineer Fire Fighting Platoon, Truck is equipped a Barton American pump, hose reels mounted below the truck body and a bell.

Class 335 Fire Fighting Equipment
as carried on the Class 325 Fire Truck

Coupling, 3 inch by 2 ½ inch
Coupling, ¾ inch female by ¾ inch male
Coupling, 2 inch female by 2 ½ inch male
Ax, fire, pickhead
Battery, flashlight, dry cell
Battery, lantern, dry cell
Bucket, galvanized
Bolt cutter
Electrical wire clipper
Double female coupling, 2 ½ inch
Double male connection, 2 ½ inch
Gated siamese, 2 ½ inch by 1 ½ inch
Conversion unit, foam, pump tank
Clawbar
Fire extinguisher, pump tank, 5 gallon
Fire extinguisher, CTC, 1 gallon
Flashlight, hand, 2 cell
Gloves, rubber & leather, linemen
Hose, hard suction, 3 inch by 10 feet
Hose, fire, 2 ½ inch, 1,200 feet
Hose, fire, 1 ½ inch, 800 feet
Hose, booster, ¾ inch, 350 feet
Hose, water, braided, ¾ inch
Kit, first aid, 24 unit
Ladder, extension, 20 foot
Ladder, roof, 12 foot
Lantern, hand, electric
Mattock, pick, 6 pounds
Nozzle, shut-off, 2 ½ inch, 1 inch tip
Nozzle, shut-off, 1 ½ inch, ½ inch tip, 1 inch thread
Nozzle, booster, 1 inch
Nozzle, fog, 1 ½ inch, w/applicator
Nozzle, foam, 1 inch, with foam injector
Pike pole, 10 foot
Rope, ¾ inch, 100 foot & ¾ inch, 50 foot coils
Shovel, round point, long handle
Shovel, square point, short D-handle
Strainer, suction, 3 inch, with rope
Tarpaulin, 18 by 18 feet, with grommets
Wrench, hydrant, adjustable
Wrench, spanner, universal
Wrench, spanner, booster hose
Gaskets, hose, assorted
Recharge units, fire extinguisher

